

Installing your Profile

To begin you must first and foremost install the ICC Profile. The ICC Profile will insure that your colors print accurately. If you received a disk you will get an auto install prompt that will walk you through the installation process. If your profile was emailed to you, simply save the profile to your desktop, right click, and hit install. For some computers this may not work. In this case you will have to manually place the profile in the correct folder in your system. To get to your profiles folder go to:

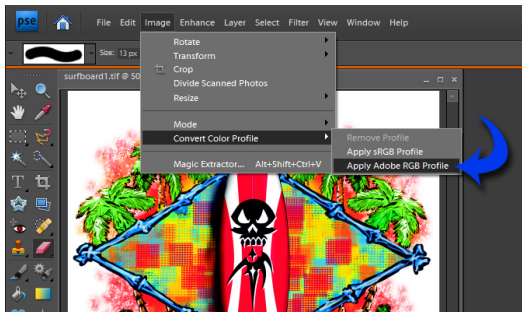
MyComputer/C: Drive/WINDOWS/System32/Spool/Drivers/Color.

Then drop the profile into the color folder and it has been successfully installed.

Step 1.

The first step is to convert the profile of your document to Adobe RGB 1998. To do so, go to image, convert color profile.

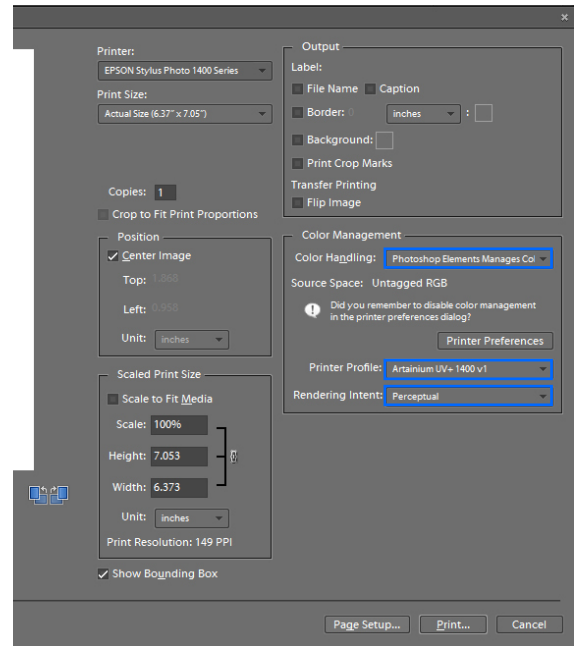
Next, select "Apply Adobe RGB Profile" from the drop down menu.



Step 2.

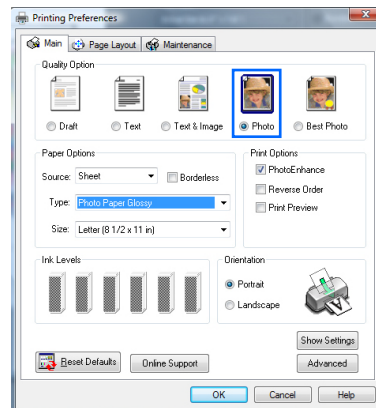
Now you are going to set up the preferences in the print menu boxes. Click File, Print, and the following dialog box should appear. In the drop down Color Handling menu, select "Photoshop Elements manages colors". The printer profile should be the Artainium UV+ profile that corresponds with the printer you are using, in our case it is an Epson 1400. Your rendering intent should read perceptual.

Step 2, Continued



Step 3.

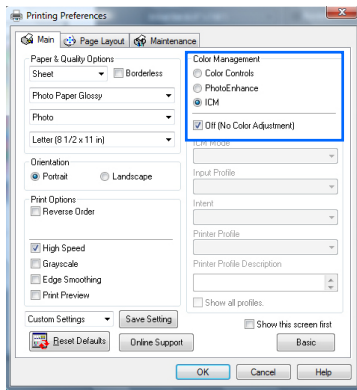
In the dialog box above, make sure the printer matches the sublimation printer you are using and click print right below it.



In the main tab (make sure you are in the basic screen. To switch back and forth from basic to advanced, click the button right above the help button at the bottom of the properties panel) set the quality to Photo Mode or less. Set the paper type to Photo Paper Glossy.

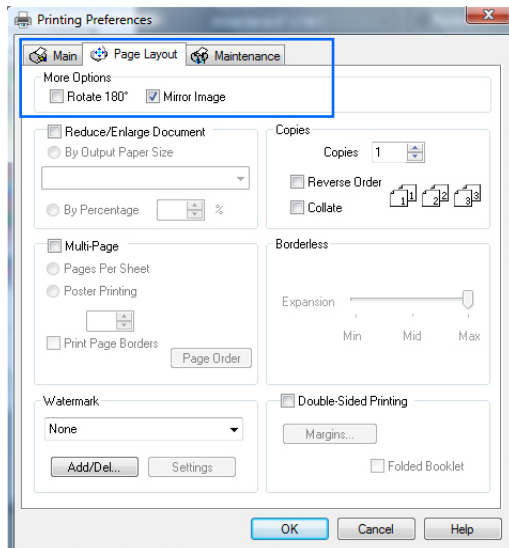
Step 3, Continued

In the advanced section of the main tab find the color management section and click the "Off (No Color Adjustment)" button. This will turn off the color controls to keep your computer from overriding the printer profile.



Step 4.

Now click the "Page Layout" tab at the top. The only part we will change in this area is Mirror Image. For most sublimation products, the image must be mirrored. Some exceptions include cutting boards, and frosted glass tiles. Neither of these items need to have a mirror image print.



Step 5 - Print!

Now you are done with all the settings and you are ready to print. You may save these print settings for future use by clicking the save settings button.

FAQ's

My Colors don't match the screen:

Make sure that your color profile is installed and set up correctly. Also, keep in mind that screen colors are completely different than printer colors, they will never look exact.

My prints look dull:

Your print will look dull or "milky" until you press it. Don't judge what the final product will look like by the print you get.

When I transfer, I either get no transfer or my transfer is all yellow:

First, make sure you have the Artainium inks in the machine and not the ones that say EPSON. Second, make sure you are pressing at 400 degrees for the recommended amount of time for the product you are pressing. Last, make sure that the item you are pressing has a 100% polyester coating. Most mugs and ceramics you get from the store are not sublimation compatible. We recommend that you stick to only the imprintables that your sublimation supplier sells. If you are doing t-shirts, the shirt must be 100% polyester; 50/50 blends will produce a faded image.

COASTAL[®]
BUSINESS SUPPLIES
Inc.

2444 Northline Industrial Dr.
Maryland Heights, MO 63043

1-800-562-7760
Local - (314) 447-2100

www.coastalbusiness.com