



## Installing your Profile

To begin we must first and foremost install the ICC Profile. The ICC Profile will insure that your colors print accurately. If you received a disk you will get an auto install prompt that will walk you through the installation process. If your profile was emailed to you, simply save the profile to your desktop, right click, and hit install. For some computers this may not work. In this case you will have to manually place the profile in the correct folder in your system. To get to your profiles folder go to:

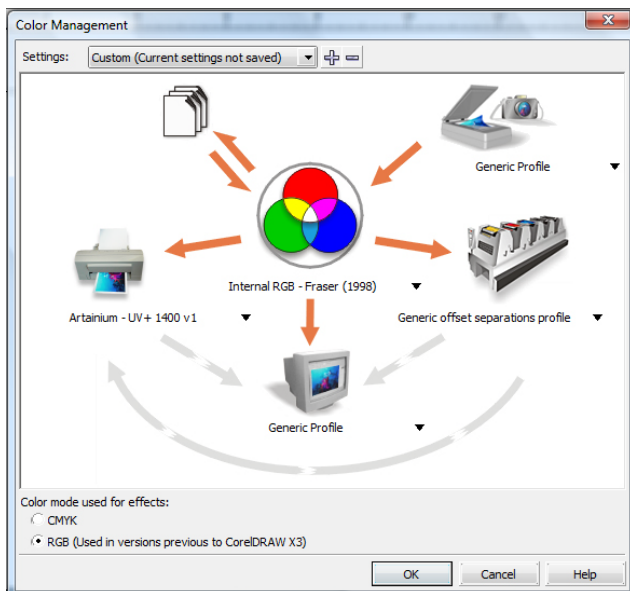
MyComputer/C: Drive/WINDOWS/System32/Spool/Drivers/Color.

Then drop the profile into the color folder and it is successfully installed.

## Step 1.

First, we need to define the color space. To do so, go to Tools - Color Management.

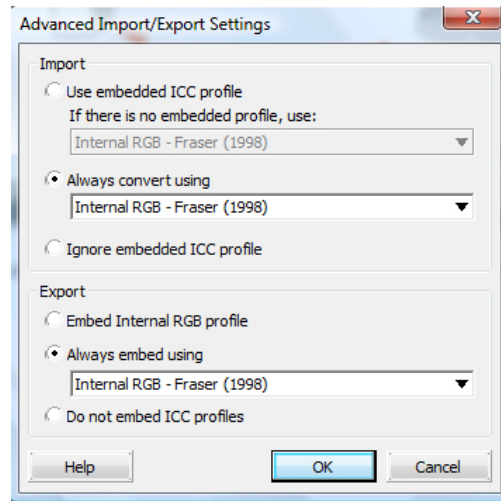
The box below should pop up. This is where you will configure Corel's Color Management.



First, we must make sure that all arrows in the dialog box are the correct color. To change them simply click on the arrows to alter the colors between (orange/grey). The final output should match the layout above.

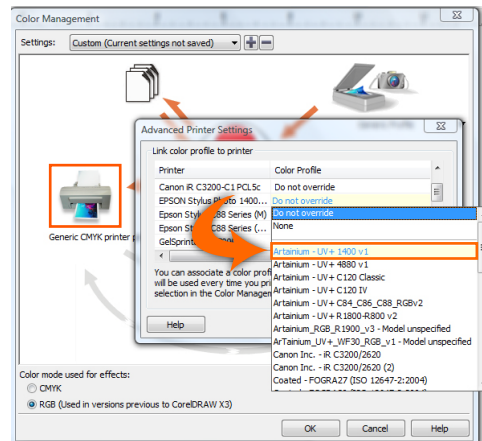
## Step 1, Continued

In that same dialog box we must now configure the import/export settings. To do so, click on the image of the paper sheets. This will open a new window, configure as shown below then select "OK".



## Step 2.

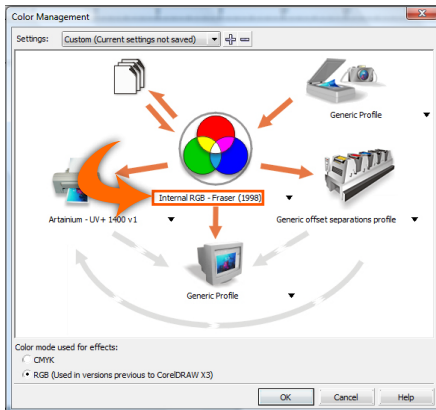
Now click the image of the printer. You should get a pop up box with a list of all the printers installed on your computer. Select the desired sublimation printer and click on the blue text that says "Do not override". If you scroll down slightly in the drop down menu, you will see the Artainium profile for your printer - select it. That profile should now take the place of the text "do not override". Now click ok.





### Step 3.

In the original Color Management box we now need to select the color space. Underneath the colored "Venn Diagram" in the middle, select "Internal RGB - Fraser 1998" from the drop down menu.



### Step 4.

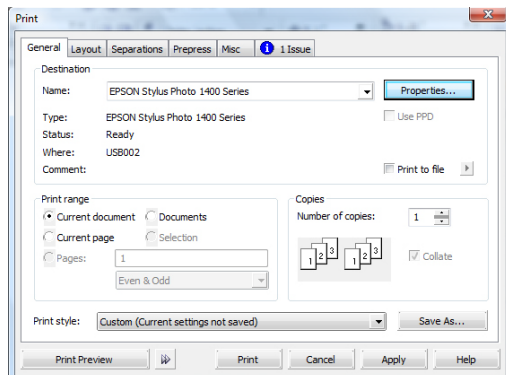
In the monitor space, you should have "generic profile" selected.

The separations printer is generally not used and should be set to "Generic Offset Separations Profile".

Now, save your settings. Click the "+" button and name your saved setting. Click OK to save.

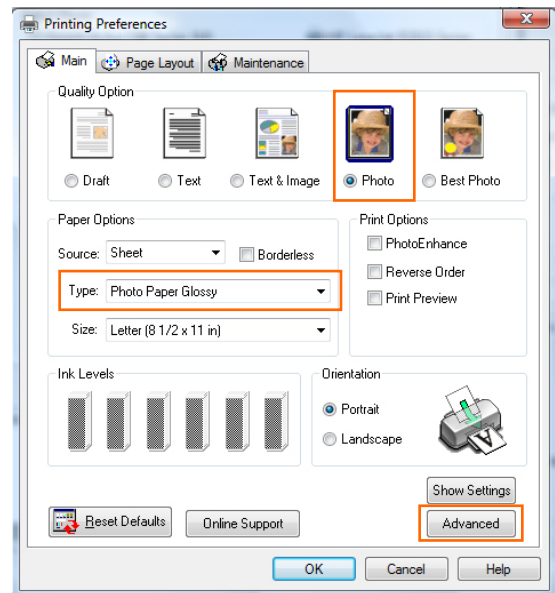
### Step 5.

Now, when it is time to print your design, go to "File - Print". Select your printer from the drop down menu, then click "Properties".

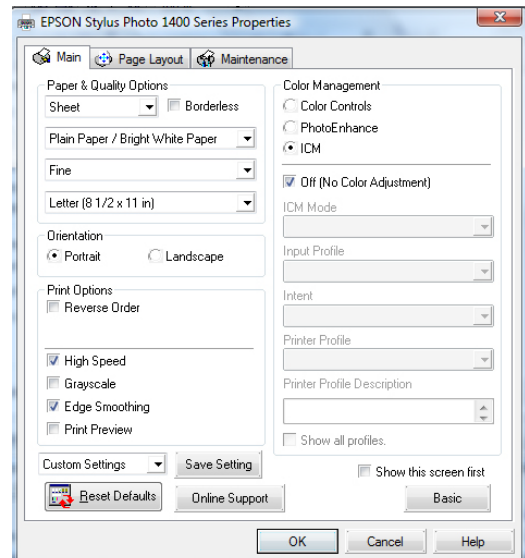


### Step 6.

In the printing preferences window make your selections as shown below. If your window does not match the window below, you may be in Advanced mode. Click the button that says "basic" right above the help button to toggle back and forth from basic to advanced.

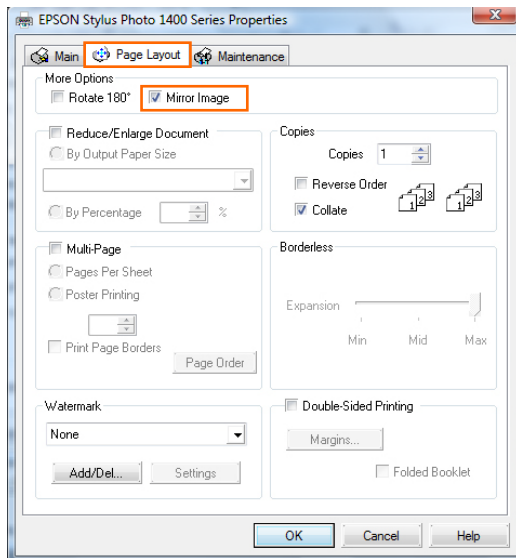


Once you are finished setting the instructions for the basic window, click the "advanced" button at the bottom. Under Color Management select "ICM", check the box that says "OFF no color adjustment".



## Step 7.

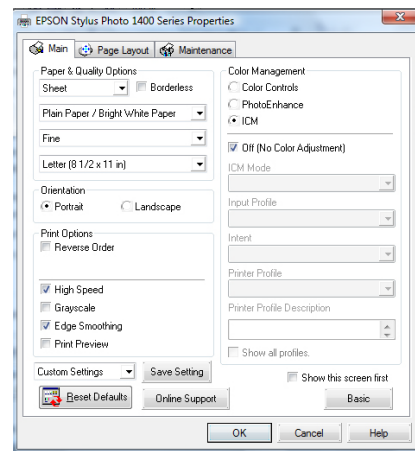
Next click on the "Page Layout" tab at the top of the properties dialog box. Under "More Options", check mark "Mirror Image".



Please note that if you have already mirrored your image in your design program there is no need to click the mirror image box. You may skip that step. Also note, the sublimatable item that you are pressing, may not require a mirrored image, such as a cutting board or a frosted tile.

## Save Settings/Print!

Before you print, you may save all your settings. To do so, return to the Main/Advanced tab in your printing properties panel. Towards the bottom there should be a drop down menu that reads "Custom Settings" Next to that click the save settings box and name your newly saved setting. Lastly, Print!



## FAQs

### *My Colors don't match the screen:*

Make sure that your color profile is installed and set up correctly. Also, keep in mind that screen colors are completely different than printer colors, they will never look exact.

### *My prints look dull:*

Your print will look dull or "milky" until you press it. Don't judge what the final product will look like by the print you get.

### *When I transfer, I either get no transfer, or my transfer is all yellow:*

**First**, make sure you have the Artanium inks in the machine and not the ones that say EPSON. **Second**, make sure that you are pressing at 400 degrees for the recommended amount of time for the product you are pressing.

**Lastly**, make sure that the item you are pressing has a 100% polyester coating. Most mugs and ceramics you get from the store are not sublimation compatible. We recommend that you stick to only the imprintables that your sublimation supplier sells. If you are doing t-shirts, the shirt, must be 100% polyester, 50/50 blends, will produce a faded image.