

## EPSON Workforce 30 EasyFlow<sup>®</sup> BULK INK SYSTEM Quick Install Guide:

### IMPORTANT!



**READ THIS**

### BEFORE YOU BEGIN...

It is **crucial** that the **OEM Ink** supplied with your printer is installed before you attempt to install your **ArTainium Inks**. This allows for two things: First, it primes the ink delivery system, ensuring that the **ArTainium Ink** will load more easily. Second, it familiarizes you with the basic operation of your printer. Please see the **EPSON Workforce 30 Getting Started Guide** for instructions on installations and printing a **Nozzle Check**.

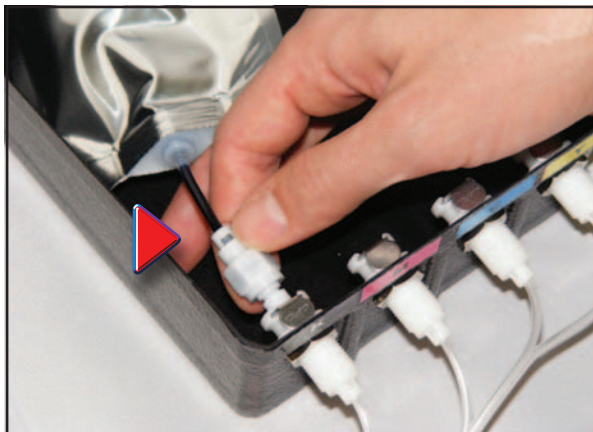


**Please read this document thoroughly before installing the system to prevent voiding your warranty**

### Components:

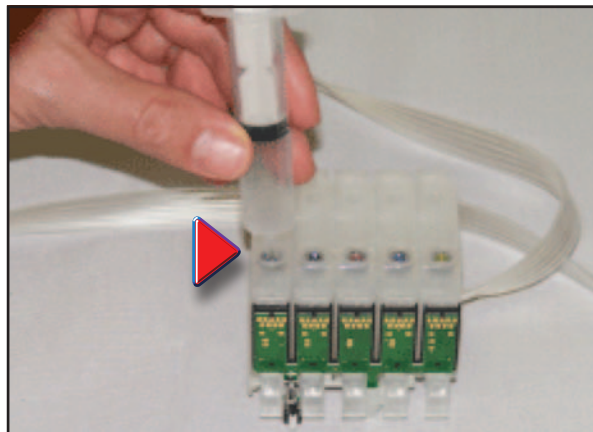
1. Bulk Ink Dampers and Tubes
2. Plastic Arm with Velcro Adhesive
3. Four (4) Plastic Syringes for Priming
4. Three (3) Plastic Dividers
5. EasyFlow<sup>®</sup> Box
6. ArTainium UV+ Ink Bags (not included with EasyFlow system)
7. Printer

## EPSON WorkForce 30 EasyFlow<sup>®</sup> BULK INK SYSTEM Installation Instructions:



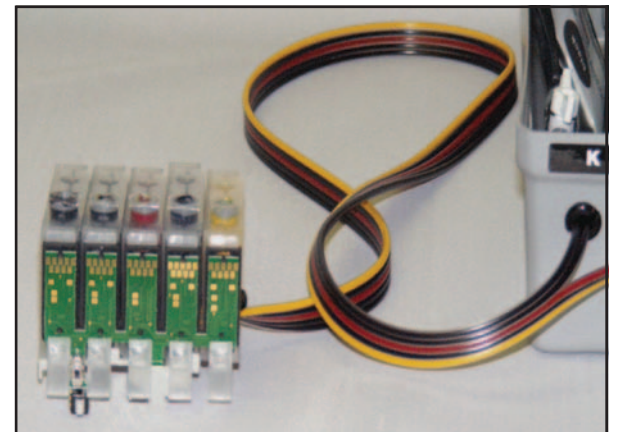
**1.** Remove the soft protective cap from each ink bag. Depress the metal tab on the inside of the EasyFlow box and insert the plastic ink valve into place. Release the metal tab to lock the bag into place. Insert the black plastic dividers to separate between the four ink bags.

**NOTE:** There are five (5) bulk ink dampers, but only 4 ink bags. Two dampers are supplied by the Black ink bag. The Black ink bag has a "Y" tube splitter that fills both black ink dampers.



**2.** Set the bulk ink dampers face down on a flat surface with the round openings facing up. Pierce the thin plastic tab that covers the opening using the tip of a sharp object such as a ball point pen. Firmly insert the tip of the plastic syringe into the gasketed opening until the tip is completely inserted.

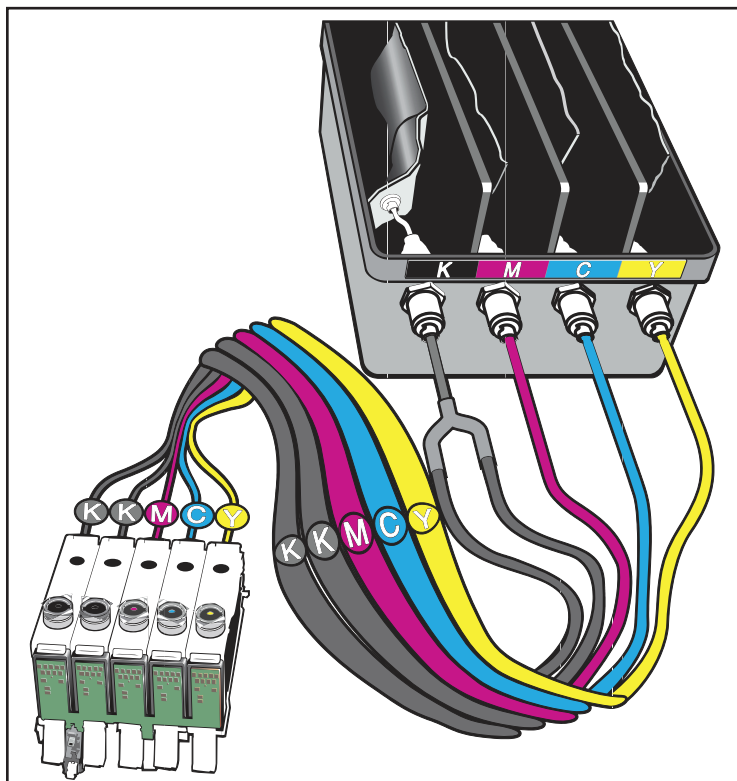
**NOTE:** The plunger needs to be pushed in and completely inserted into the syringe.



**3.** Slowly extract the plunger. Ink will start to flow through the tubing into the damper. Continue extracting the plunger until ink begins to flow into the tip of the syringe.

**NOTE:** You may have to repeat this process twice to complete the priming of each ink damper.

Repeat this process for the other four channels.



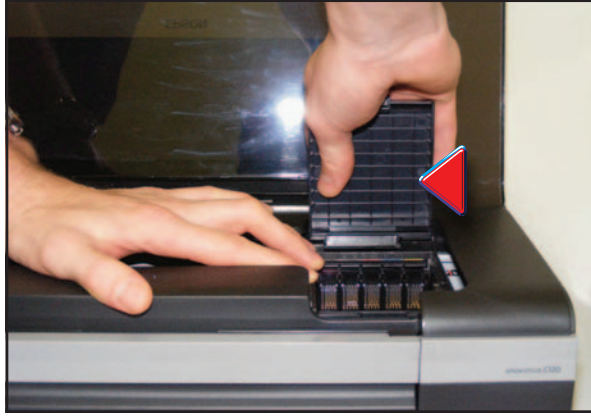
Once the ink bags have been connected your EasyFlow bulk ink system should look like the graphic on the left.

Turn to page two for detailed instructions on how to connect the EasyFlow BULK INK SYSTEM to your Epson Workforce 30 printer.

# EPSON WorkForce 30 EasyFlow® Bulk Ink System Setup Instructions: Continued...



**1.** Turn the printer on. Wait for the printer to complete its start up procedure. Lift the lid, and press the ink button. The ink cartridge bay will shift into a position on the right.



**2.** Raise the lid of the ink cartridge bay. Firmly grasp the lid and twist it sideways until it becomes dislodged. The lid will not be needed for proper functioning of the printer with either the Quick Connect system or individual ink cartridges.



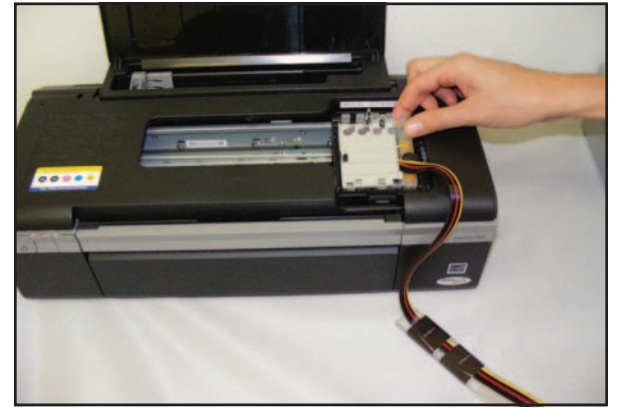
**3.** The ink cartridge bay should look like the picture above after removing the ink cartridge cover.



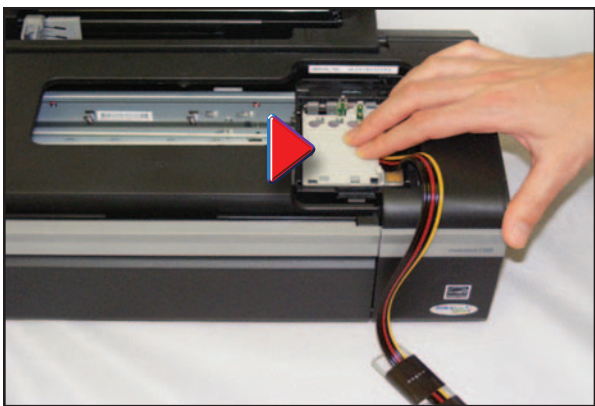
**4.** Remove the printer cover panel by inserting a flat head screwdriver between the panel and the printer. Gently push the cover panel loose.



**5.** Insert the flat head screwdriver into the opposite side of the printer. Hold the cover panel with one hand, gently push the cover panel loose and remove it.



**6.** Place the ink dampers into the empty ink bay cartridge. The Black ink damper should be on the far left side, the yellow on the far right side.

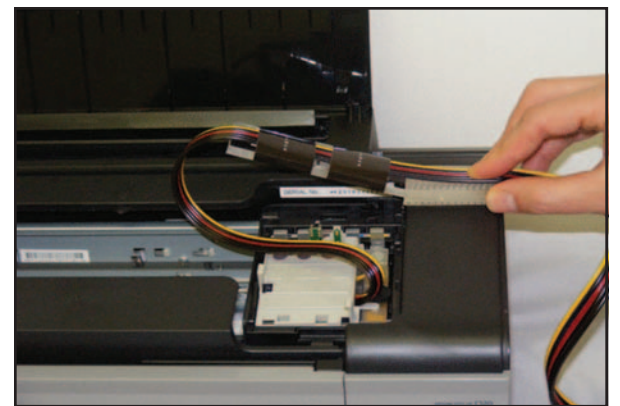


**7.** Firmly push down the plastic Cartridge set of dampers to completely engage the ink dampers into place.

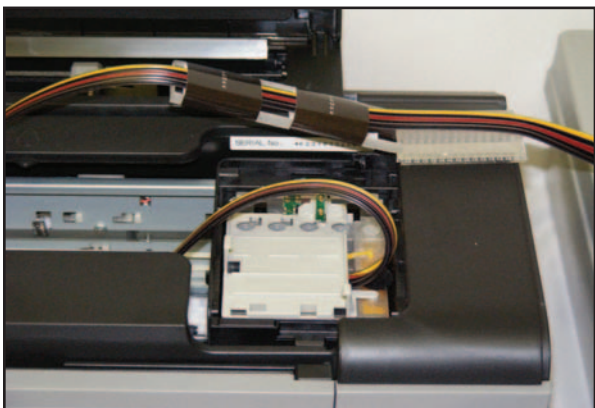
**NOTE:** You will have to push each individual damper hinge into position until it clicks into place (see below). The printer will not 'recognize' the ink damper until it is firmly into place.



**8.** Install the plastic support arm. First remove the adhesive backing on the back of the plastic arm.



**9.** The plastic tubing comes pre-attached to the plastic arm with two adhesive bands. Position the plastic arm on the far upper right side of the printer.



**10.** The plastic arm should be aligned so that the edge of the adhesive Velcro is situated at the upper top right hand corner of the ink cartridge bay. Press the plastic arm firmly to set the adhesive Velcro in place.



**11.** Press printer ink button ( second button on the left side of the printer). The printer will start to prime and reset itself. The ink cartridge carriage will move in position.



**12. Congratulations.** You have installed your Epson Workforce 30 EasyFlow BULK INK SYSTEM. You are now ready to install the PowerDriver IQ for the Workforce 30 Software.



## TIPS:

- Perform a nozzle check from the Epson driver utility — A few cleanings may be necessary to prime the system.
- You may have a little air in your lines but this will clear after a few prints.
- Do not raise the ink box higher than the printer.